

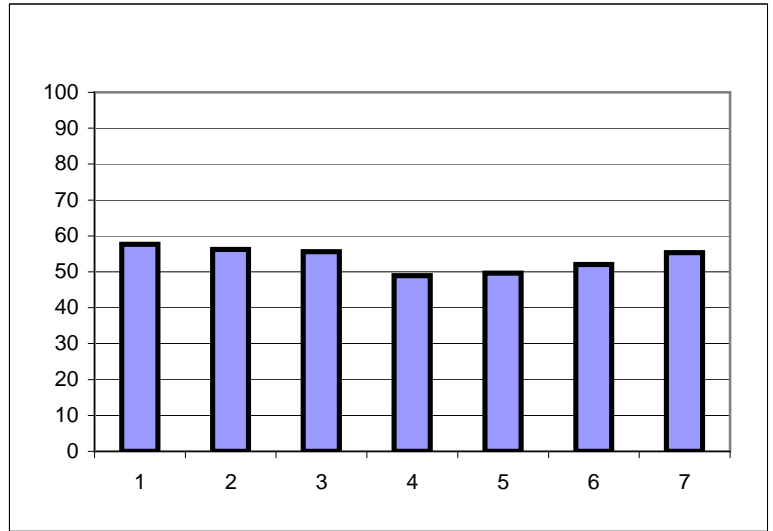
**2008/09 Performance Standards  
Percentage of Students Fully Meeting or Exceeding Expectations**

**Reading**

---

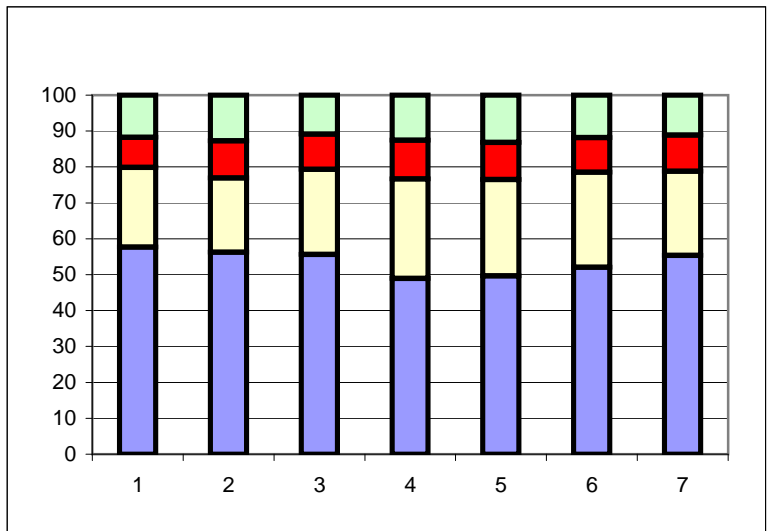
All Students

|         | 1  | 2  | 3  | 4  | 5  | 6  | 7  |
|---------|----|----|----|----|----|----|----|
| Burnaby | 58 | 56 | 56 | 49 | 50 | 52 | 55 |



All Students

|                      | 1  | 2  | 3  | 4  | 5  | 6  | 7  |
|----------------------|----|----|----|----|----|----|----|
| Modified Prog        | 12 | 13 | 11 | 13 | 13 | 12 | 11 |
| Not Yet Meeting      | 8  | 10 | 10 | 11 | 10 | 10 | 10 |
| Minimally Meeting    | 22 | 21 | 24 | 28 | 27 | 26 | 23 |
| Meeting or Exceeding | 58 | 56 | 56 | 49 | 50 | 52 | 55 |



**2008/09 Performance Standards  
Percentage of Students Fully Meeting or Exceeding Expectations**

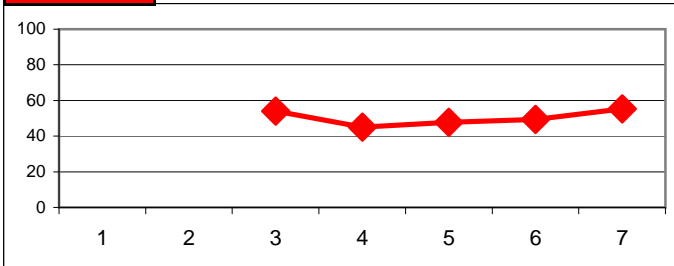
**Reading**

---

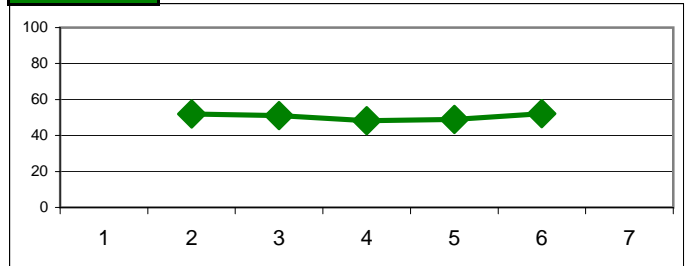
Burnaby Cohort Tracking

|            | 1  | 2  | 3  | 4  | 5  | 6  | 7  |
|------------|----|----|----|----|----|----|----|
| 08/09 Gr 7 |    |    | 54 | 45 | 48 | 49 | 55 |
| 08/09 Gr 6 |    | 52 | 51 | 48 | 49 | 52 |    |
| 08/09 Gr 5 | 54 | 52 | 55 | 48 | 50 |    |    |
| 08/09 Gr 4 | 52 | 56 | 57 | 49 |    |    |    |
| 08/09 Gr 3 | 54 | 56 | 56 |    |    |    |    |
| 08/09 Gr 2 | 54 | 56 |    |    |    |    |    |

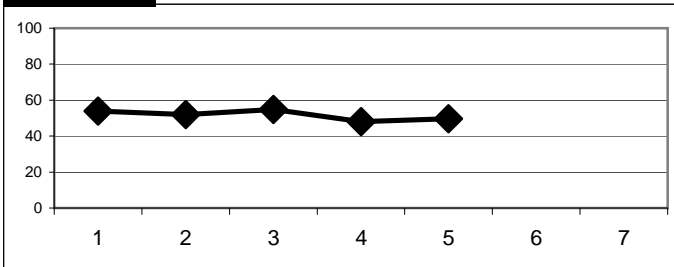
**07/08 Gr 7**



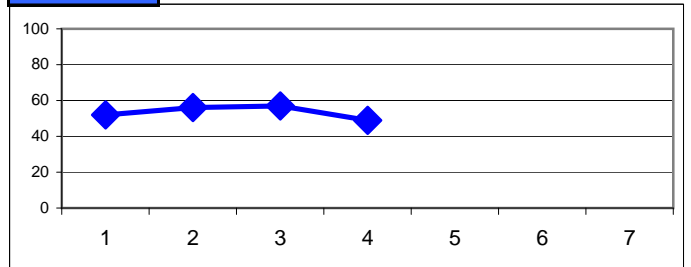
**07/08 Gr 6**



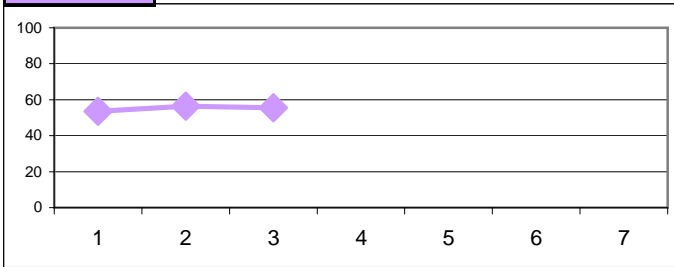
**07/08 Gr 5**



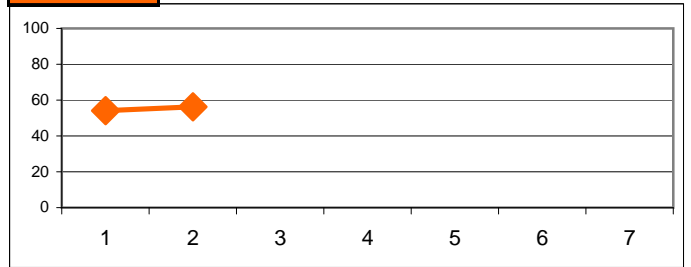
**07/08 Gr 4**



**07/08 Gr 3**



**07/08 Gr 2**



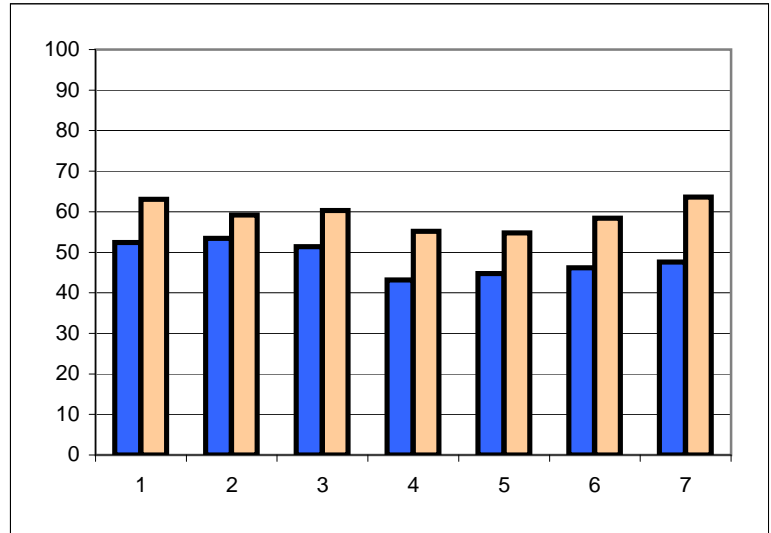
**2008/09 Performance Standards  
Percentage of Students Fully Meeting or Exceeding Expectations**

**Reading**

---

Burnaby - Gender Split

|       | 1  | 2  | 3  | 4  | 5  | 6  | 7  |
|-------|----|----|----|----|----|----|----|
| Boys  | 52 | 53 | 51 | 43 | 45 | 46 | 48 |
| Girls | 63 | 59 | 60 | 55 | 55 | 58 | 64 |



---

Summary: In Burnaby a higher proportion of girls than boys fully meet or exceed expectations in all grades.

---

**2008/09 Performance Standards  
Percentage of Students Fully Meeting or Exceeding Expectations**

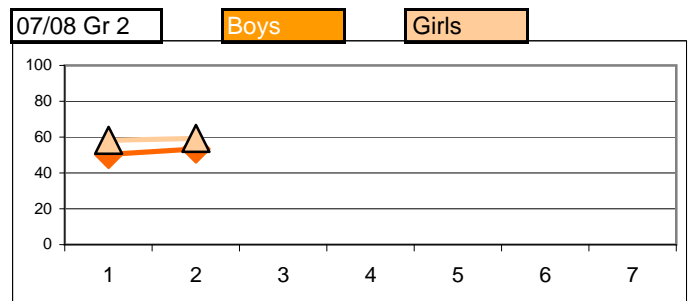
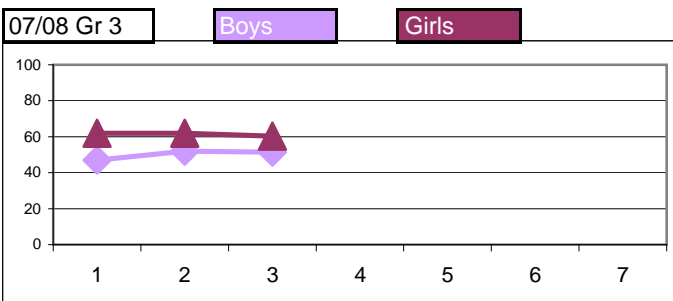
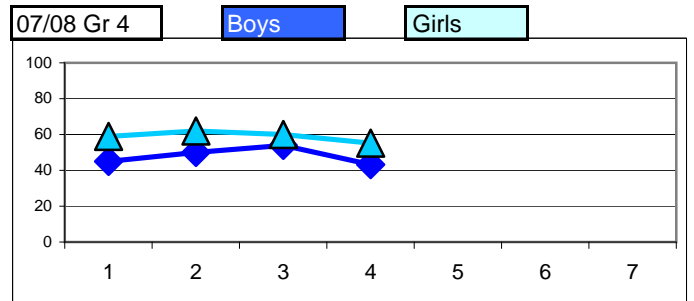
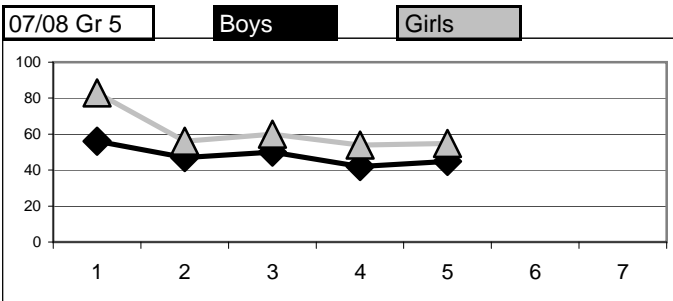
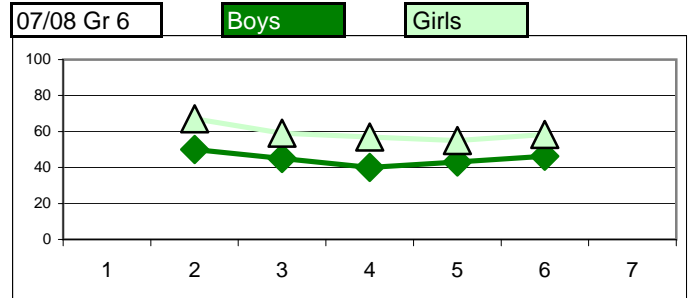
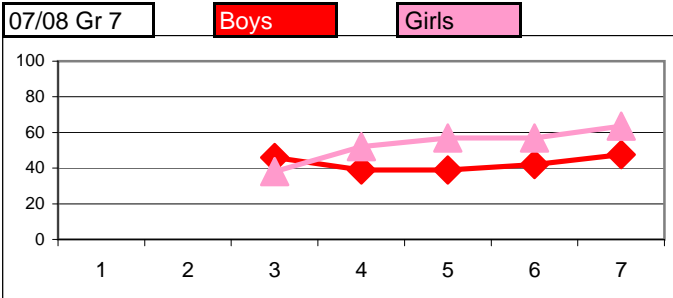
**Reading**

---

Burnaby Gender Cohort Tracking

| <b>Boys</b> | 1  | 2  | 3  | 4  | 5  | 6  | 7  |
|-------------|----|----|----|----|----|----|----|
| 08/09 Gr 7  |    |    | 46 | 39 | 39 | 42 | 48 |
| 08/09 Gr 6  |    | 50 | 45 | 40 | 43 | 46 |    |
| 08/09 Gr 5  | 56 | 47 | 50 | 42 | 45 |    |    |
| 08/09 Gr 4  | 45 | 50 | 54 | 43 |    |    |    |
| 08/09 Gr 3  | 47 | 52 | 51 |    |    |    |    |
| 08/09 Gr 2  | 50 | 53 |    |    |    |    |    |

| <b>Girls</b> | 1  | 2  | 3  | 4  | 5  | 6  | 7  |
|--------------|----|----|----|----|----|----|----|
| 08/09 Gr 7   |    |    | 38 | 52 | 57 | 57 | 64 |
| 08/09 Gr 6   |    | 67 | 59 | 57 | 55 | 58 |    |
| 08/09 Gr 5   | 83 | 56 | 60 | 54 | 55 |    |    |
| 08/09 Gr 4   | 59 | 62 | 60 | 55 |    |    |    |
| 08/09 Gr 3   | 62 | 62 | 60 |    |    |    |    |
| 08/09 Gr 2   | 58 | 59 |    |    |    |    |    |



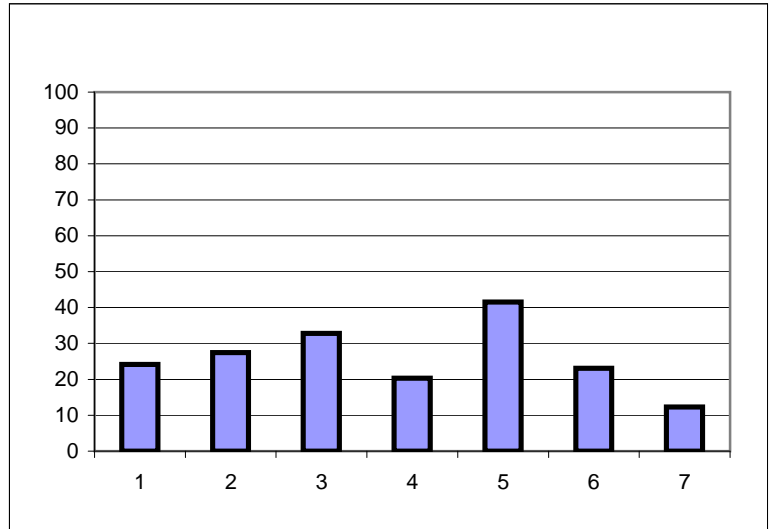
2008/09 Performance Standards  
Percentage of Students Fully Meeting or Exceeding Expectations

Reading

---

Aboriginal Students

|         | 1  | 2  | 3  | 4  | 5  | 6  | 7  |
|---------|----|----|----|----|----|----|----|
| Burnaby | 24 | 27 | 33 | 20 | 42 | 23 | 12 |



**2008/09 Performance Standards  
Percentage of Students Fully Meeting or Exceeding Expectations**

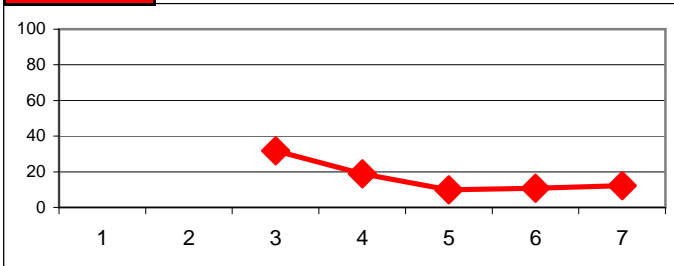
**Reading**

---

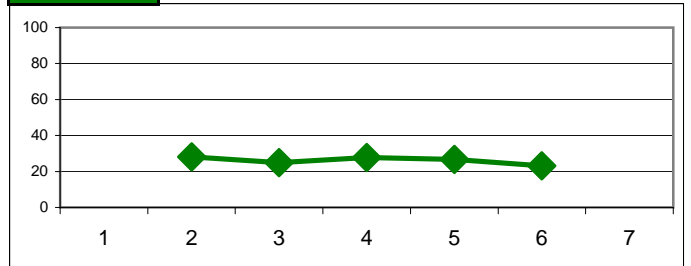
Burnaby Aboriginal Student Cohort Tracking

|            | 1  | 2  | 3  | 4  | 5  | 6  | 7  |
|------------|----|----|----|----|----|----|----|
| 08/09 Gr 7 |    |    | 32 | 19 | 10 | 11 | 12 |
| 08/09 Gr 6 |    | 28 | 25 | 28 | 27 | 23 |    |
| 08/09 Gr 5 | 46 | 47 | 45 | 25 | 42 |    |    |
| 08/09 Gr 4 | 25 | 35 | 42 | 20 |    |    |    |
| 08/09 Gr 3 | 40 | 42 | 33 |    |    |    |    |
| 08/09 Gr 2 | 32 | 27 |    |    |    |    |    |

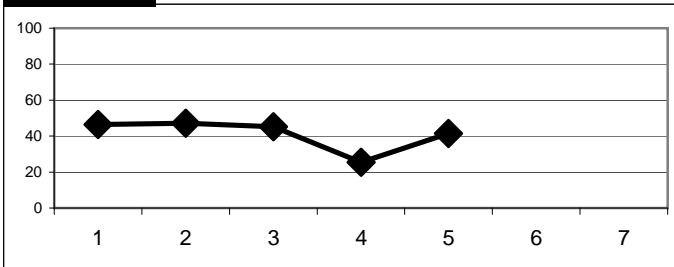
**07/08 Gr 7**



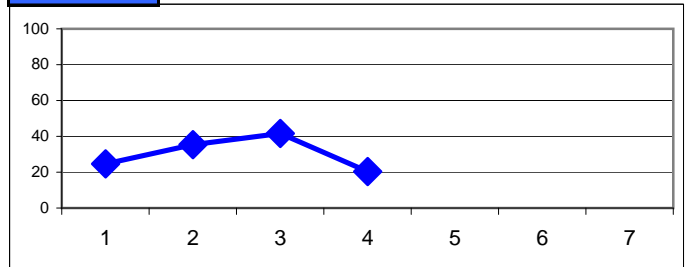
**07/08 Gr 6**



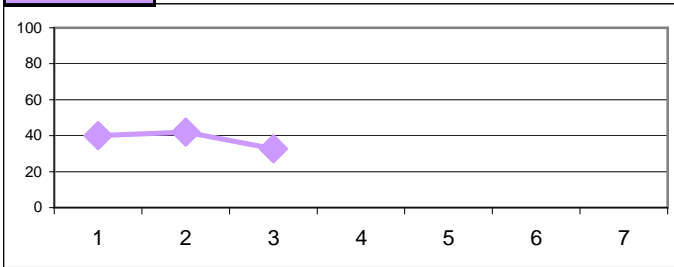
**07/08 Gr 5**



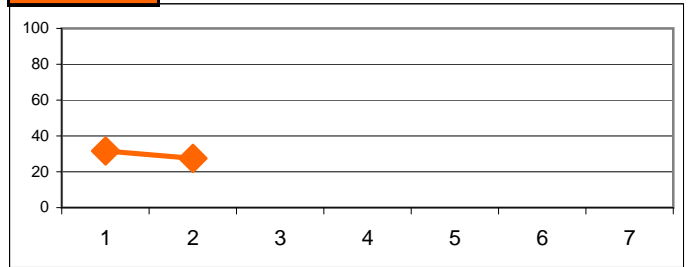
**07/08 Gr 4**



**07/08 Gr 3**



**07/08 Gr 2**



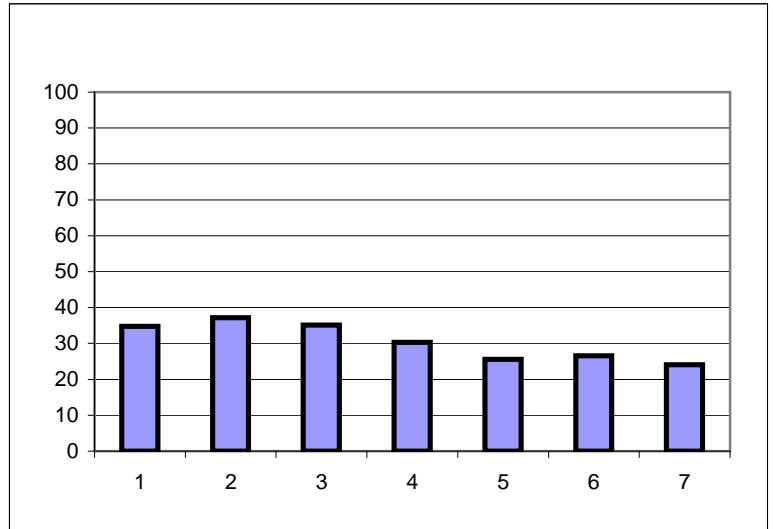
2008/09 Performance Standards  
Percentage of Students Fully Meeting or Exceeding Expectations

Reading

---

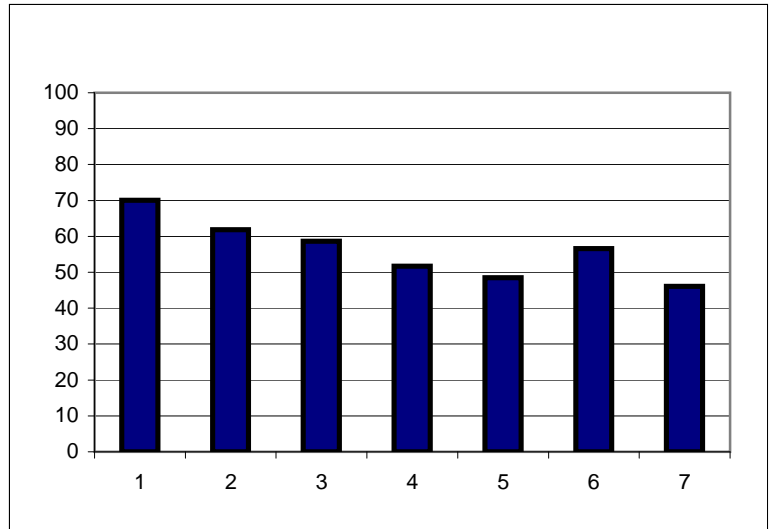
All ESL Students

|         | 1  | 2  | 3  | 4  | 5  | 6  | 7  |
|---------|----|----|----|----|----|----|----|
| Burnaby | 35 | 37 | 35 | 30 | 26 | 27 | 24 |



Level 3 and 4 ESL Students

|         | 1  | 2  | 3  | 4  | 5  | 6  | 7  |
|---------|----|----|----|----|----|----|----|
| Burnaby | 70 | 62 | 59 | 52 | 48 | 57 | 46 |



**2008/09 Performance Standards  
Percentage of Students Fully Meeting or Exceeding Expectations**

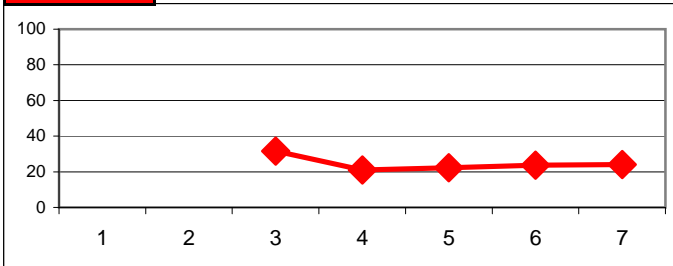
**Reading**

---

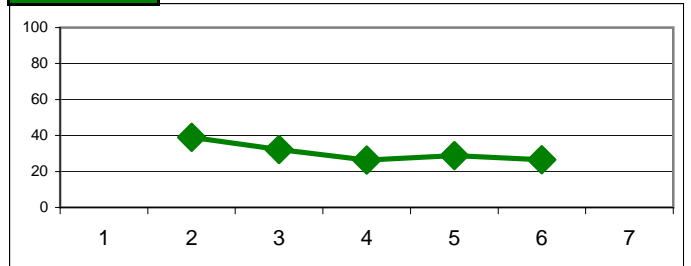
Burnaby ESL Student Cohort Tracking

|            | 1  | 2  | 3  | 4  | 5  | 6  | 7  |
|------------|----|----|----|----|----|----|----|
| 08/09 Gr 7 |    |    | 32 | 21 | 22 | 24 | 24 |
| 08/09 Gr 6 |    | 39 | 32 | 26 | 29 | 27 |    |
| 08/09 Gr 5 | 37 | 34 | 40 | 29 | 26 |    |    |
| 08/09 Gr 4 | 43 | 42 | 35 | 30 |    |    |    |
| 08/09 Gr 3 | 45 | 36 | 35 |    |    |    |    |
| 08/09 Gr 2 | 27 | 37 |    |    |    |    |    |

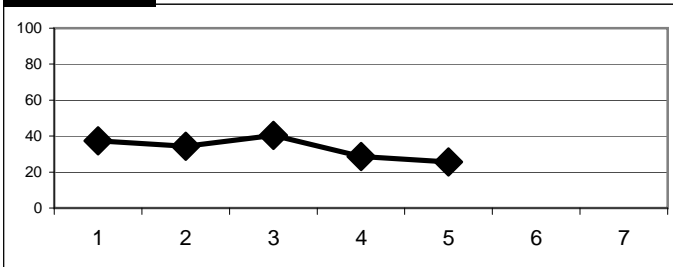
**07/08 Gr 7**



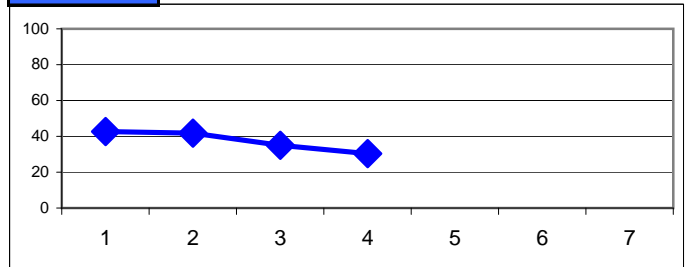
**07/08 Gr 6**



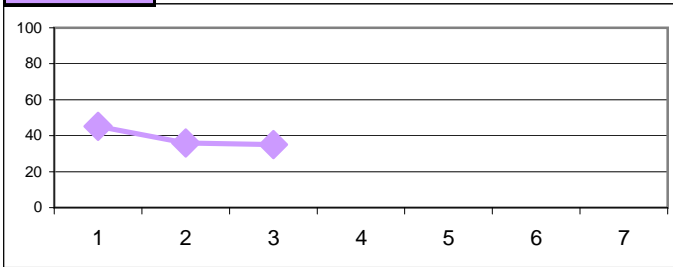
**07/08 Gr 5**



**07/08 Gr 4**



**07/08 Gr 3**



**07/08 Gr 2**

