

**SUPERINTENDENT'S ANNUAL REPORT ON STUDENT ACHIEVEMENT
TO THE BOARD OF EDUCATION OF BURNABY
DECEMBER 11, 2007**



REPORTING REQUIREMENT

Section 22 of the School Act was amended last spring to require districts to submit to the Board of Education, no later than December 15, 2007, a report on student achievement. This report, when approved by the Board will be sent to the Ministry of Education and then made available to the public.

THE DISTRICT CONTEXT

The district enrolls over 23,200 school-aged students in 40 elementary schools and 8 secondary schools. In addition, the school district also provides a growing summer elementary and secondary program that enrolls close to 5,000 students and a comprehensive Adult and Continuing Education service to over 15,000 part-time learners. Nearly 800 of the district's students are of aboriginal descent and are supported by the Aboriginal Education Support Team.

District enrolment continues to remain stable with a slight decrease in overall enrolment for the 2007-2008 school year. The district also operates a number of Provincial Resource Programs including: the British Columbia School for the Deaf; the Burnaby Youth Custody Centre, the Maples Adolescent Centre and the British Columbia Oral Program.

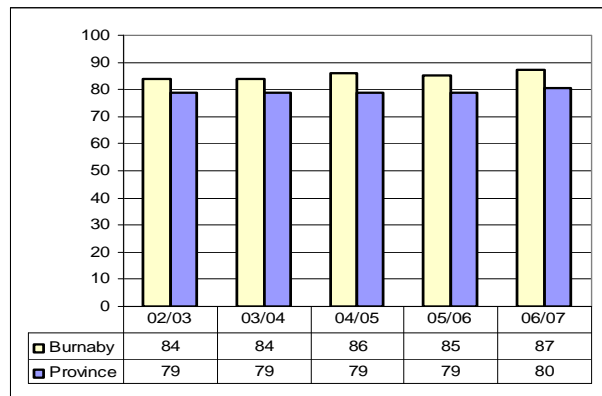
Burnaby is a culturally diverse urban community where 80 different languages are spoken in the homes of district students. The district offers comprehensive English as a Second Language (ESL) programs to more than 4,300 students and opened a Reception and Welcome Centre in the Fall of 2007. This Welcome Centre supports new Canadians with language assessment and school placements and with information regarding community supports. Burnaby is also an economically diverse community with 23% children and families living below the poverty line, and close to 40% of all Burnaby residents are in rental housing. The school district prides itself in its efforts to create a safe, caring and inclusive environment that fosters positive relationships and supports all learners.

GRADE 12 COMPLETION AND BEYOND - STUDENT ACHIEVEMENT

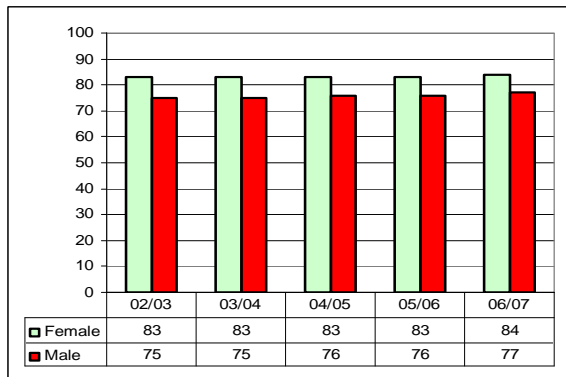
The material in this report is primarily taken from the District's Accountability Contract (see the district website at www.sd41.bc.ca), and represents a limited perspective as it relates to student achievement. A full Year-End Report, encompassing all the areas of our educational mandate is being prepared for the Board and will be presented in January 2008.

Burnaby's six-year completion rates are increasing and higher than the provincial average. For the past five years, the percentage of graduating Burnaby students who receive a Dogwood Certificate within six years of entering secondary school has increased from 84% to 87%.

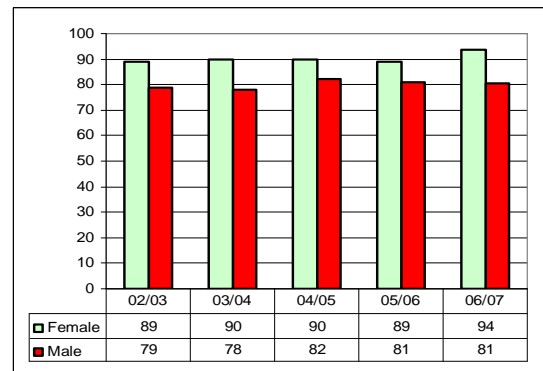
All Students



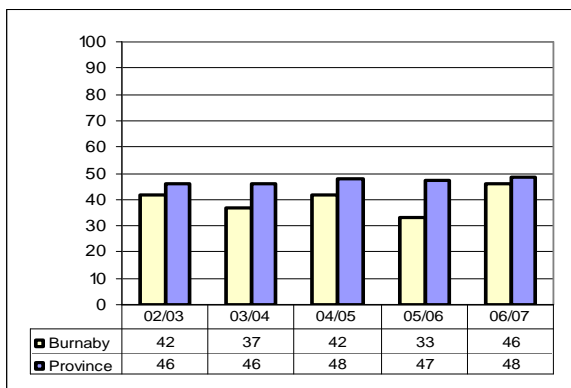
Province – Male/Female



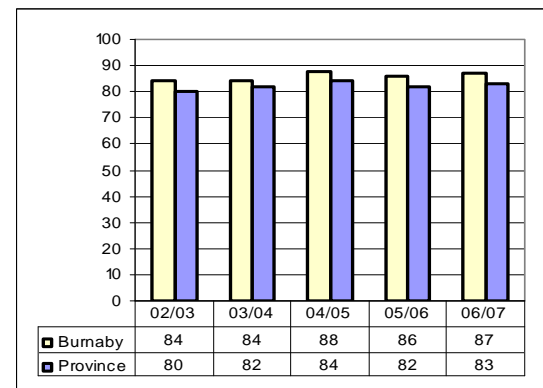
Burnaby – Male/Female



Aboriginal



ESL



The data also shows that:

- ESL student Dogwood completion increased from 86% to 87.3%.
- The Aboriginal Dogwood completion rate increased from 33% to 46%, which is a five year high.

A WORD ABOUT OUR GRADUATES

a) Advanced Placement (AP)

AP stands for Advanced Placement. It is a program of college-level courses and exams that offer bright, motivated students the opportunity to challenge themselves and get ahead by earning advanced placement and/or credit for college or university level courses while they are still in high school.

- The Advanced Placement Program in Burnaby is the largest in North America.
- Each year the district sets new records for participation and achievement as it celebrates the accomplishments of the Advanced Placement Scholars.
- The 2006/07 results are outstanding and reflect the hard work and dedication of staff and students.

AP SUMMARY

	# of Exams	# of Students	% with 3+
World-wide	2.1 million	1.1 million	75%
Canada	19,258	12,968	76%
B.C.	7,133	4,541	81%
Burnaby	1,381	740	83%

b) Scholarships

- The value of scholarships earned by Burnaby graduates continues to increase on an annual basis.
- Including Passport to Education awards, students who graduated in June, 2007, earned in excess of \$4.1 million in scholarships and awards.
- This represents an increase of 23% over the amount earned in 2005/06.

c) Transitions to Post Secondary

- The most recent provincial data (2004) indicates that Burnaby students have one of the highest transition rates to universities and colleges.
- In Burnaby the transition rate was 69%, well above the provincial average of 50%.

d) Career Programs

- Over 3800 students are participating in work experience activities which reflect a wide range of career areas.
- The on-site work experience program is supported by a database of over 3000 employers.
- The number of Industry Training Programs has increased from 2 in 2004 to 14 in 2007.
- Industry Training Programs (including Apprenticeship, Industry Certifications and Industry Connect programs) currently enroll 180 students.

A Student's Story: Gianluca Russo - Cook Training Program



“The goal of the program is to bring every student to his or her full potential in the cooking profession”, says Chef Steve Wade, program instructor. The *Cook Training Program* is seen by industry as an “amazing stepping stone for students, offering a more extensive training program than many current chefs experienced.” Gianluca, a Burnaby graduate, completed the *Cook Training Program* and went on to win the Best Teen Chef 2007 Competition in Vancouver. Gianluca says, “It’s time for our generation to step up... I’ll never stop growing in this industry.”

PROVINCIAL EXAMS—HOW ARE WE DOING?

a) Grade 10 and 11 Exams (Blended Marks)

- All students were at or above the provincial average in all subjects.
- With the exception of Applications of Math 10, ESL students were at or above the provincial average in all subjects.
- With the exception of Socials 11, Aboriginal students were at or above the provincial average.

b) Grade 12 Exams (Blended Marks)

Burnaby students continue to perform well in the required Grade 12 Provincial Exams

- English 12 – 98% success rate.
- Communication 12 – 95% success rate.

c) Grade 12 Optional Exams (Blended Marks)

- In the majority of our Grade 12 Optional Exams, students are performing at or above provincial average, with the exception of Geology 12 and Applications of Math 12.

GRADE 12 COMPLETION AND BEYOND - CHALLENGES

The district is pleased with the progress made by students, however there is a need to focus attention on the following:

a) Aboriginal Students

- In celebrating the increase to the graduation rate from 33% to 46%, there continues to be a wide gap between aboriginal students and non-aboriginal students.
- In order to address this gap the district has developed a comprehensive database to allow student progress to be more accurately monitored and adjusted.
- The Board of Education and the Aboriginal Education Advisory Committee are proud to announce that on March 6, 2008, Burnaby’s first Aboriginal Enhancement Agreement will be officially signed. The goals and objectives outlined in the Enhancement Agreement will provide increased support for our students.

b) Vulnerable Learners

- The Learning Transition Services is developing a three-year strategic plan to connect early learning through to adult. A tracking system is being developed to ensure that no student is left behind. Learning Transition Services will focus on grade to grade transitions to ensure a smooth transition for all students. The district's Secondary Alternate Programs are also being reviewed to ensure a comprehensive plan is in place to support students who have alternate learning styles.
- Learning Support Services has been reorganized to enhance the support services for "at-risk" students.

c) Provincial Exam Results

- Individual schools conduct a review of the provincial exam results and develop plans to address any areas of concern. Last year district staff worked with science teachers to address a decline in our Biology marks. The result of these discussions led to an improvement in student success rates. This year our focus will be on Applications of Math

DISTRICT LITERACY GOAL - STUDENT ACHIEVEMENT

The district continues to view Literacy as a high priority. Four indicators are used to chart student progress in Literacy: Kindergarten Assessment Summary, Reading and Writing Performance Standards, Report Card Results, and the Foundation Skills Assessment.

- Trend data in the Kindergarten Assessment Summary indicate more learners are meeting expectations, and, therefore fewer are requiring literacy support in Grade 1.
- Grade 4 and 7 students scored above the provincial average in the FSA.
- Performance Standards in Reading and Writing indicate both Primary and Intermediate students are improving.
- The Language Arts Report Card results indicate that Intermediate and Secondary male learners maintained or slightly increased their achievement levels in Reading and Writing.
- FSA results for Burnaby's Aboriginal students in Grade 4 and 7 reading comprehension, and Grade 4 writing are significantly higher than the provincial average for Aboriginal students.

DISTRICT LITERACY GOAL - CHALLENGES

While we are pleased with student progress in general, several areas are being addressed:

a) Performance Standards

- Increased Performance Standards results for Primary students in Reading and Writing are encouraging, that said, focused strategies and structures are needed to be in place to improve Language Arts results, and to maintain continuous improvement for Aboriginal students and male learners. The district continues to focus on increasing the achievement of our Primary male learners and to close the male/female achievement gap. (see District's Achievement Contract)

b) Participation Rates

- Participation rates are lower than expected in some of our elementary schools, and the district has been working with our schools to improve these rates.

c) Kindergarten Assessment

- Through the work of the Kindergarten Learning Project and the District's Early Literacy Committee, the district is developing and implementing further assessments and instruction for early learners.

d) English as a Second Language (ESL) Students

- The district will be introducing a district-wide assessment tool for the placement of ESL students.
- Additional programs have been developed to support the growing number of refugee students and their families who settle in Burnaby.

EXPANDED MANDATE

In March, 2007, the Ministry of Education introduced Bill 20, which made a number of significant changes to the work of School Boards. One such change was the Expanded Board Mandate dealing with Early Learning and Community Literacy and changing the name of School Boards to Boards of Education.

In Burnaby, we have an extensive number of programs and initiatives taking place in the areas of Early Learning and Literacy. Working in partnership with our community, these programs and initiatives continue to support and enhance the learning opportunities for our students.

a) Early Learning

The District provides a number of innovative early learning programs and services designed to improve school readiness and success. Children and their parents/caregivers can choose from a menu of early learning opportunities and programs that include:

- Ready, Set, Learn events in all schools
- 8 StrongStart/Family Literacy Centres
- Learning Together

- Parent and Child Mother Goose
- Welcome to Kindergarten
- Reach Out and Read (ROAR)
- Preschool Library

In addition, the district works with the Burnaby Early Childhood Development Committee to organize and promote Healthy Kids Preschool Fairs.

b) District Literacy Plan

The Burnaby School District is developing a District Literacy Plan in partnership with its broader literacy community. Burnaby, based on their involvement in community literacy, was selected as one of ten pilot districts in the province. Excellent progress is being made in the development of this plan, and working with our community partners has enhanced and enriched our discussions.

CONCLUDING REMARKS

In summarizing and recognizing the success of our students, I must also recognize and acknowledge the work of teachers, support staff, parents, administrators, community and business partners, district staff, and the Board of Education. Working together, in a spirit of collaboration and partnership, has made a significant difference in achieving our educational goals, and ensuring success for all students.

APPROVAL

The Superintendent’s Annual Report on Student Achievement was approved by the Board of Education at its meeting on Tuesday, December 11, 2007.

SUBMISSION TO THE MINISTER OF EDUCATION

The Superintendent of the Burnaby School District respectfully submits the Annual Report on Student Achievement to the Minister of Education.

Date: _____

Signed: _____

Name: Sheila Rooney
 Superintendent – Burnaby School District